

Model 9112

Articulating LCD Mount



Model 9112 features foldable arms which adjust vertically up and down a 14" pole. The arms can fold up to fit in about 3" of space and extend out 14". Various pole lengths and extensions are available or can be designed to fit any application you may be looking for. Unique cable management allows cables to be tucked under the forearm extensions.

FEATURES

- ▲ 14" standard pole (*custom pole lengths are available*)
- ▲ Rotates 360 degrees at three joints
- ▲ Monitor can tilt over 200 degrees
- ▲ Includes FLEXmount™ – six different mounting options in one kit
- ▲ Ideal for slatwall mounting; can be combined with all Innovative mount options (*sold separately*)



Mount two monitors with model 9112-D



Integrated cable management



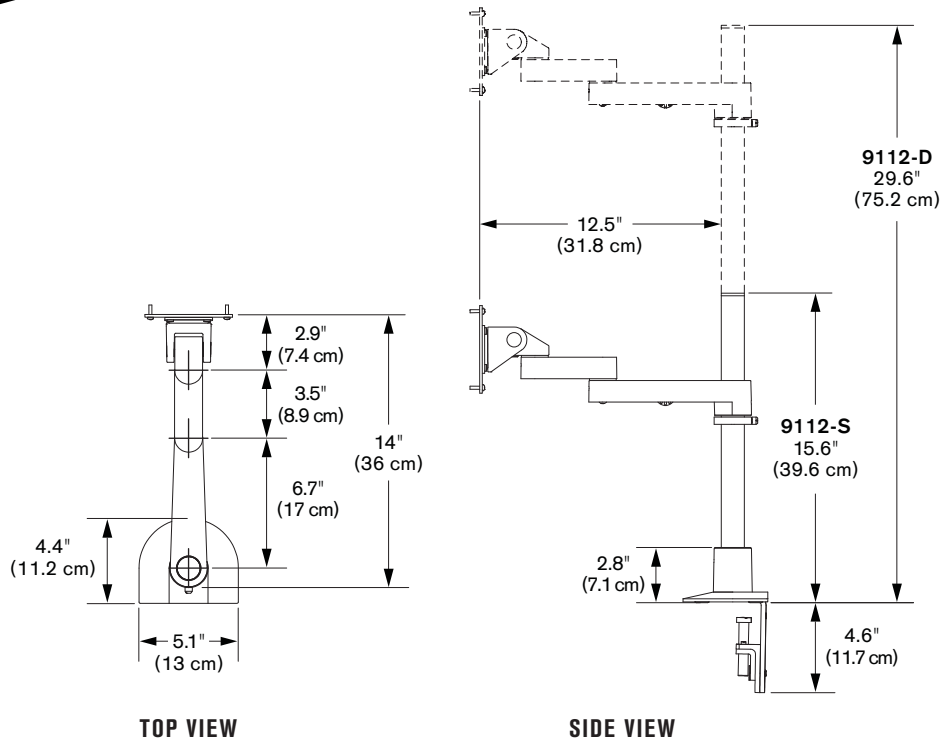
Arm extends up to 14"



Folds into 3" of space

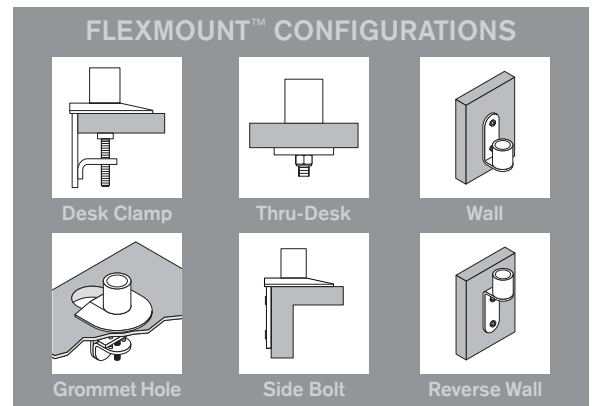
Model 9112

Specifications



CAPABILITIES

- Horizontal range**..... 14" (36 cm) from back of pole
- Pole size**..... 14" (36 cm) **9112-S**, 28" (71 cm) **9112-D**
- Monitor tilt**..... 200 degrees
- Monitor pivot**..... Landscape to portrait
- Monitor compatibility**..... VESA® 75mm and 100mm
- Mounting options**..... FLEXmount™, Slatwall, Wall, Thru-Desk
- Monitor weight**..... Up to 40 lbs (18 kg) per monitor

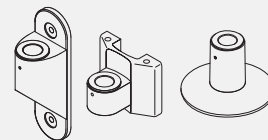


OPTIONAL ACCESSORIES



QUICK RELEASE ADAPTERS

Allows for quick attach and release of monitor (8336-QR).



MOUNTS

Wall (8325), slatwall (8246) and thru-desk (8312).